

Handicap Accessible Bicycle

Client: Ted Elias

Advisor: John Puccinelli

Team: Morgan Kemp mrkemp@wisc.edu (Team Leader)
 Tianna Garcia tngarcia@wisc.edu (Communicator)
 Shelby Mochal smochal2@wisc.edu (BPAG)
 Emmy Russell eerussell2@wisc.edu (BWIG/BSAC)

Date: 3/4/17-3/9/17

Problem Statement

The current options for a disabled adult to participate in a fun task such as going for a bike ride are very limited in availability and price. The current market also does not provide multiple options to fit the needs of a traumatic brain injury (TBI) patient and their limited mobility. Not only is our client's wife recovering from a TBI, but also a mother who would very much enjoy going for simple bike ride. By creating a new bike "sidecar" custom to the needs and capabilities of the client's wife and with cost of around \$500, more family activities can be a part of our client's life.

Last Week's Goals

- To finish solidworks design

Summary of Team Role Accomplishments

- Team Leader, Morgan: Facilitated team meetings, made agenda
- Communicator, Tianna: Followed up with clients for Tabea's leg length
- BSAC, Emmy: Attended BSAC meeting
- BWIG, Emmy: Updated website with project status and progress report
- BPAG, Shelby: Ordered some materials through Dr. Puccinelli

Summary of Design Accomplishments

- Created new frame measurements, revamped budget, solidworks progress

Activities

Date	Person	Task	Time(hrs)	Weekly Total	Semester Total
3/10/17-3/15/17	Morgan	Solidworks	5	7.25	22.5
3/6/17		Created Master Measurement Sheet	.5		
3/6/17		Email to Don Stone	.25		
3/6/17		Updated Budget Excel	1		
3/6/17		Called Paddle Boat Supply	.25		
3/5/17		Agenda	.25		
3/2/17	Tianna	Design dip bar in solidworks	1	3.25	16.75
3/3/17		Research on smaller tires	1		
3/5/17		Client follow-up email on leg measurements for pedal distance	0.25		
3/6/17		Contact professor about material choice for frame	0.5		

3/6/17		Calculate pedal arm length possible given smaller wheel diameter	0.5		
3/6/17	Shelby	Work on updated budget proposal	.5	1	12.25
3/6/17		Contact MS&E professor about material choice for our frame	.5		
3/8/17		Calculated smallest possible wheel diameter			
3/7/17		Research on second attachment piece for travoy hitch			
3/4/17	Emmy	Worked on budget proposal	1	2.75	14.5
3/6/17		Emailed Professor Heidi Ploeg about material choice	0.25		
3/5/17		Calculated smallest possible wheel size	0.5		
3/6/17		Calculated weight, price, and lifetime differences between steel and aluminum	1		
3/8/17	Team	Meeting	1	1	10.5

Statement of Team Goals

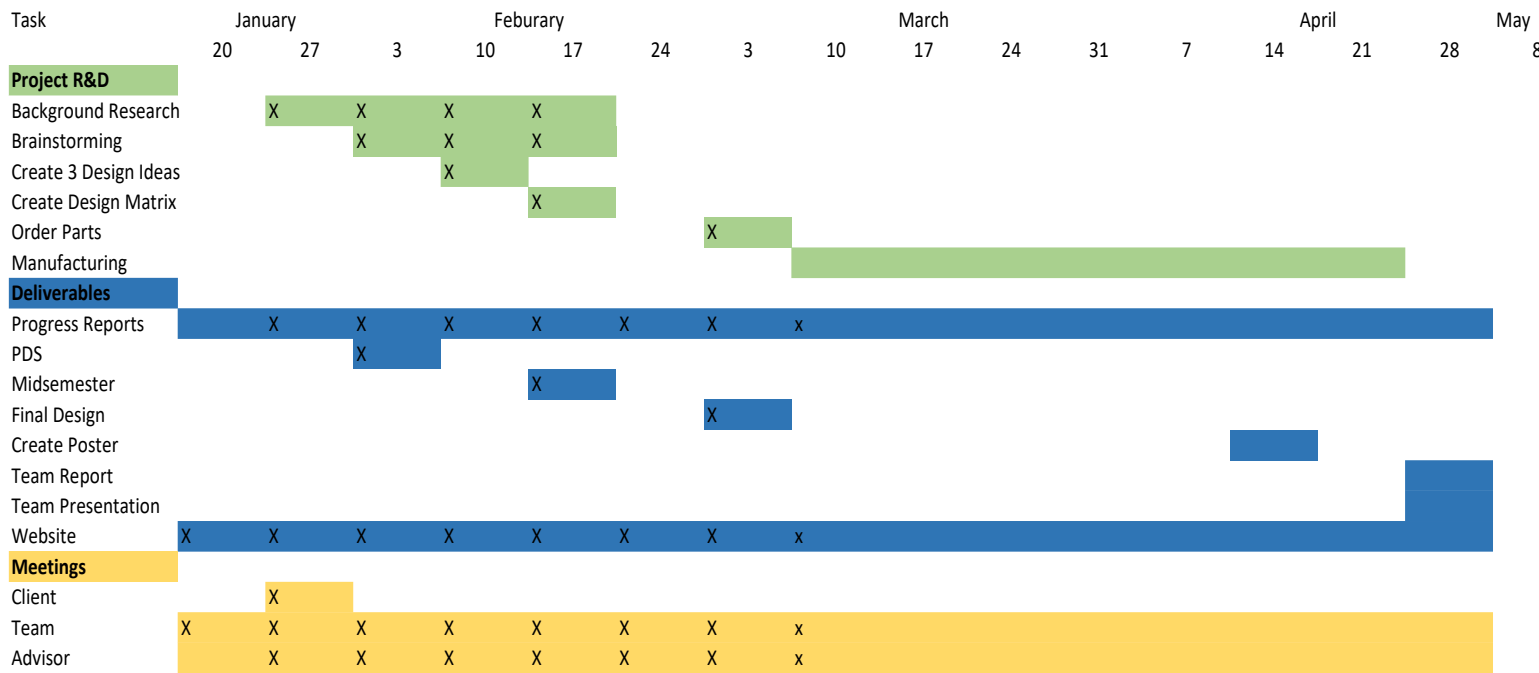
To order all materials and begin manufacturing.

Individual Goals

- Morgan – To find another welding seminar
- Tianna – Redesign my solidworks model of the wheels to fit the new choice and keep checking back for client's response on leg measurements
- Shelby- Attend welding seminar
- Emmy-

Difficulties: None

Project Schedule/Timeline:



Expenses: None